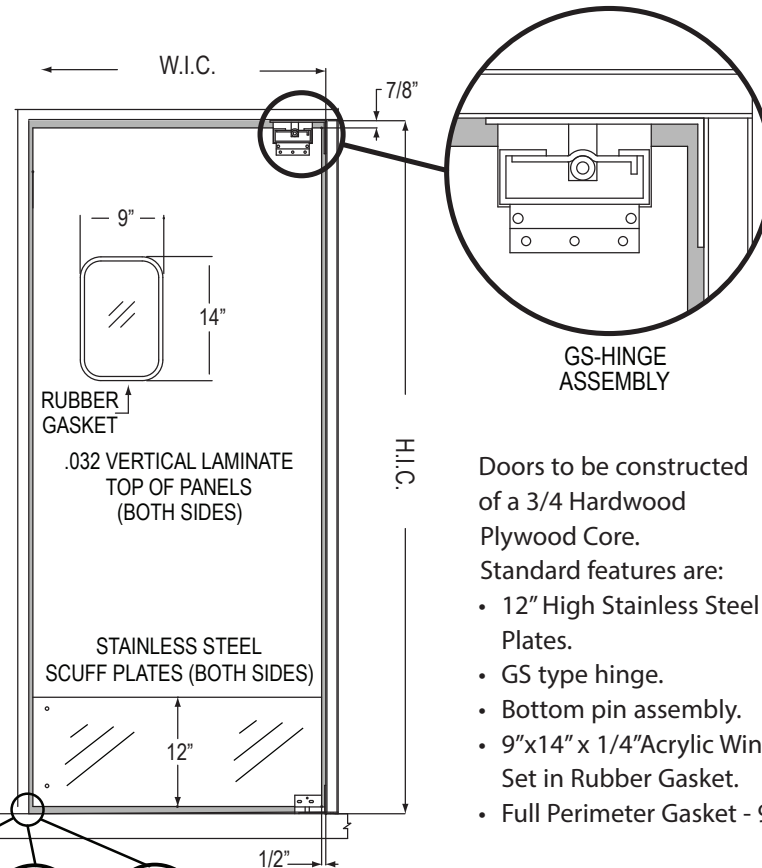


# DOUBLE ACTING "RIGID" TRAFFIC DOOR

**National ACCESS DESIGN LLC**

513-351-3400 fax: 866-300-4539 sales@nationalaccessdesign.com

NationalAccessDesign.com



Doors to be constructed of a 3/4 Hardwood Plywood Core.

Standard features are:

- 12" High Stainless Steel Impact Plates.
- GS type hinge.
- Bottom pin assembly.
- 9"x14" x 1/4" Acrylic Window Set in Rubber Gasket.
- Full Perimeter Gasket - 9000-HPLG

## DOOR SPECIFICATION

Opening Width \_\_\_\_\_ x Height \_\_\_\_\_

Qty. \_\_\_\_\_ SINGLE PANEL  
L R

## PRESSURE LAMINATE'S

Manufacturer \_\_\_\_\_

Stock# \_\_\_\_\_

Color# \_\_\_\_\_

## TEARDROP BUMPER

FB12" FB18" FB24"  
FB30" FB36" FB42"

## STAINLESS STEEL IMPACT PLATE OPTIONS

12" (STANDARD) 18"

## EDGE TRIM

STAINLESS STEEL CAPS - 9000HPL

PVC (RIGID) - 9000HPL

FULL GASKET - 9000HPLG

## WINDOW SIZE

9"x14" (STANDARD) 14"x16"  
22"x22"

## HARDWARE OPTIONS

(STANDARD) GS HINGE W/ BOTTOM PIN

GS HINGE W/ (OPTIONAL) 10" JAMB GUARD

(OPTIONAL) STAINLESS STEEL GS HINGE

W/ SS BOTTOM PIN

(OPTIONAL) STAINLESS STEEL GS HINGE

W/ SS 10" JAMB GUARD

(OPTIONAL) STAINLESS STEEL 10" JAMB GUARD

W/ STANDARD HINGES

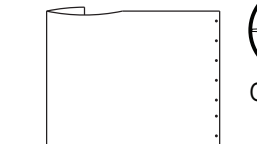
## NAD-9000-HPL or HPLG IMPACT DOOR

JOB NAME/LOCATION

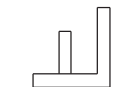
CUSTOMER/LOCATION

CUST. ORDER NO.

CUST. PO ORDER NO.



FB-TEARDROP BUMPER



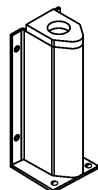
BOTTOM PIN (STND.)



GASKET

SS CAP

PVC



JAMB GUARD

\*CAFE DOOR ON SEPARATE SPEC SHEET.

Charges will be assumed by buyer for changes or cancellations to work in process. Buyer hereby accepts responsibility for all sizes and dimensions. This order will not be processed until all acknowledgement forms are signed and returned.

Specification accepted by: \_\_\_\_\_

Date: \_\_\_\_\_