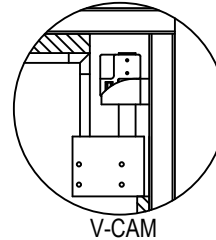
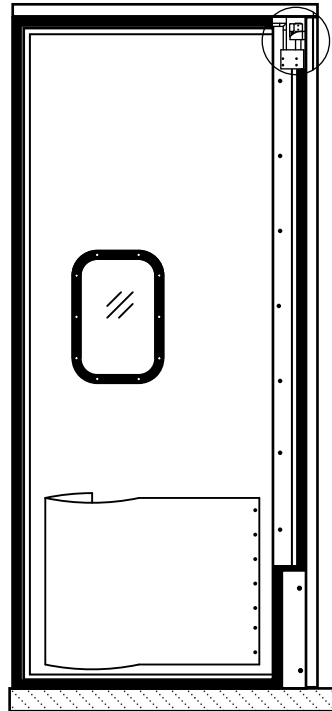


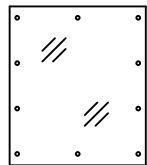
DOUBLE ACTING "INSULATED" TRAFFIC DOOR



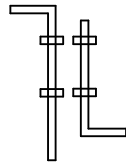
ASSEMBLY (OPTIONAL)

Doors to be constructed from a custom rigid P.V.C. interior tubing with an aluminum extrusion and thermo-plastic facings.

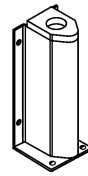
- Standard features are:
- Bottom 10" Jamb Guard.
 - 9"x14" Vacuum formed window frames.
 - Fully insulated, 1 3/4" thick panels.



PLASTIC IMPACT PLATE



CANE BOLTS



10" JAMB GUARD



LOCKING COLLAR

Updated: 4/8/2025

Charges will be assumed by buyer for changes or cancellations to work in process. Buyer hereby accepts responsibility for all sizes and dimensions. This order will not be processed until all acknowledgement forms are signed and returned.

Specification accepted by: _____

Date: _____

National ACCESS DESIGN LLC
 513•351•3400 fax: 866•300•4539
 sales@NationalAccessDesign.com

DOOR SPECIFICATION

Opening Width _____ x Height _____

Quantity _____

SINGLE PANEL L R

THERMOPLASTIC FACINGS COLOR OPTIONS

BLACK	WHITE	BROWN
BEIGE	DK.GRAY	GREEN
CANYON BLUE	LT.GRAY	RED

TEARDROP BUMPERS (BLACK HDPE STANDARD)

FB12"	FB18"	FB24"	FB30"
FB36"	FB42"	FB48"	

IMPACT PLATES (BLACK ABS STANDARD)

PL12"	PL18"	PL24"
PL 30"	PL 36"	PL42" PL48"

WINDOW SIZES

10"x30"	9"x14" (STD)
14"x16"	22"x22"



HARDWARE OPTIONS

CANE BOLTS
 LOCKING COLLARS

WASHDOWN PACKAGE

NAD 8500

JOB NAME/LOCATION

CUSTOMER/LOCATION

CUST. ORDER NO.

CUST. P.O. NO.