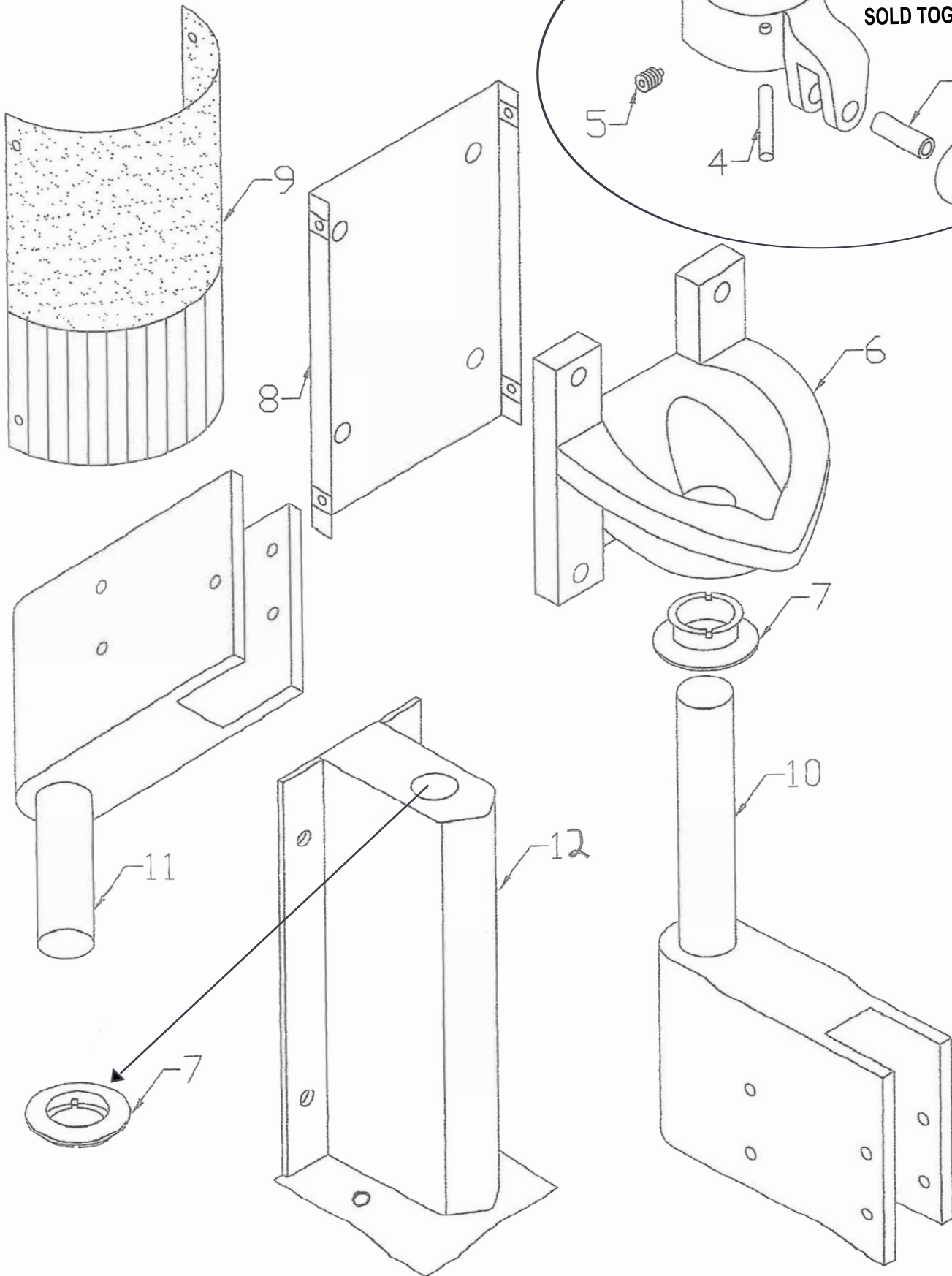


# NATIONAL ACCESS DESIGN



**PARTS 1, 2, 3, 4, 5  
SOLD TOGETHER**

## MOUNTING INSTRUCTIONS FOR LD V-CAM DOORS

**PART #                                      PART: ID                                      COST:**

<b>PARTS 1,2,3,4,5</b>	<b>CAM FOLLOWER WITH BEARING</b>	
<b>PART 6</b>	<b>V-CAM BASE WITH INSERT</b>	
<b>PART 7</b>	<b>DELRIN INSERT FOR V-CAM BASE &amp; 10" JAMB GUARDS</b>	
<b>PART 8</b>	<b>CAM COVER MOUNTING BRACKET &amp; CLIPS</b>	
<b>PART 9</b>	<b>CAM COVER (BLACK)</b>	
<b>PART 10</b>	<b>TOP SADDLE MOUNT (size different from the bottom saddle mount)</b>	
<b>PART 11</b>	<b>BOTTOM SADDLE MOUNT</b>	
<b>PART 12</b>	<b>10" JAMB GUARD WITH DELRIN INSERT</b>	
<b>GASKET</b>	<b>1 1/2" REPLACEMENT GASKET 1 1/2"</b>	
	<b>WINDOW KITS AND REPLACEMENT BUMPERS AVAILABLE</b>	