

DOUBLE ACTING "RIGID" TRAFFIC DOORS

National ACCESS DESIGN LLC

(513) 351-3400

nadllc@fuse.net

www.nationalaccessdesign.com

DOOR SPECIFICATIONS

Opening Width _____ x Height _____

Qty. _____

BI-PARTING

SINGLE PANEL

L R

PLASTIC IMPACT PLATES

PL12"

PL24"

PL36"

PL48"

OTHER

TEARDROP BUMPERS

FB12"

FB18"

FB24"

FB36"

STANDARD COLOR OPTIONS

WHITE

BLACK

GRAY

BEIGE

RED

WINDOW SIZES

9"x14"

14"x16"

22"x 22"

10"x 30"

HARDWARE OPTIONS

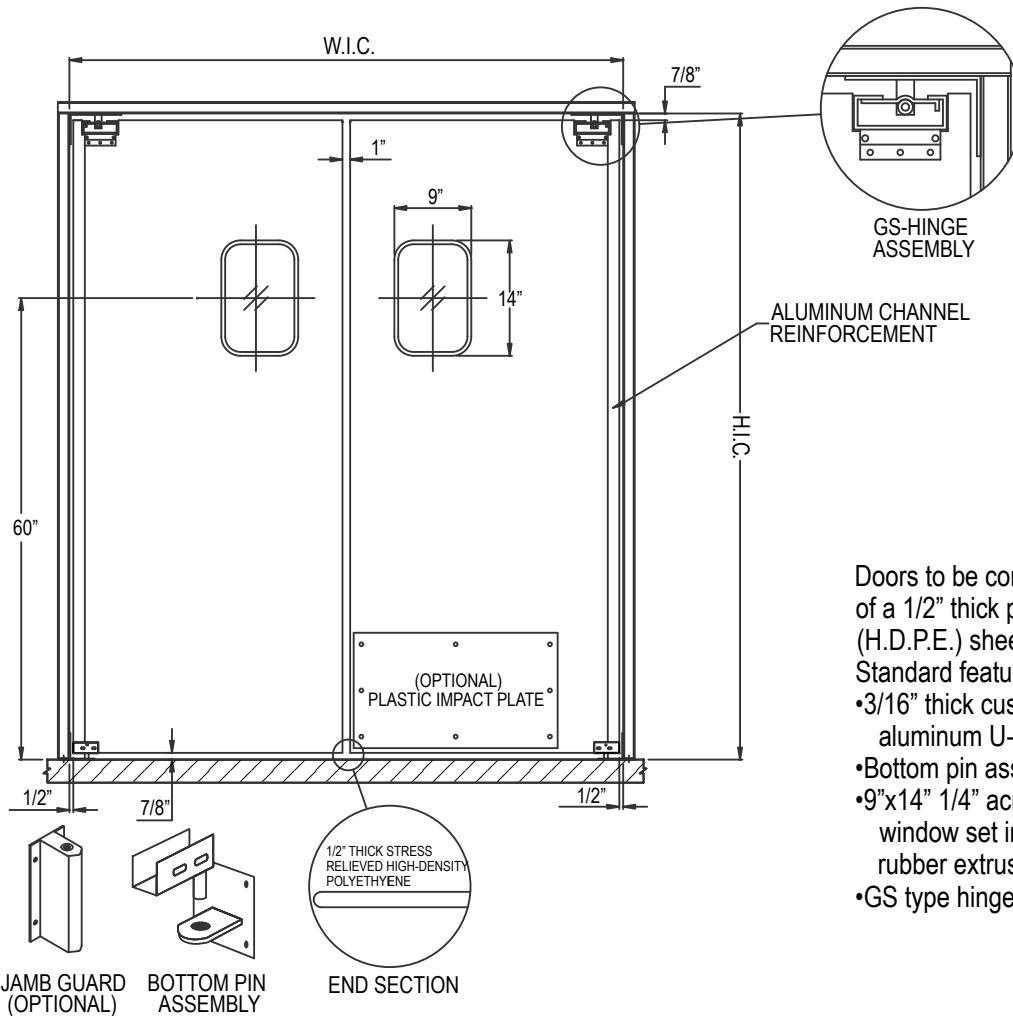
JG-10 (10")

BOTTOM PIN (STND)

STAINLESS STEEL

GS HINGE

CAFE/GATE HINGE



Doors to be constructed of a 1/2" thick polyethylene (H.D.P.E.) sheet.
 Standard features are:
 • 3/16" thick custom aluminum U-channel
 • Bottom pin assembly
 • 9"x14" 1/4" acrylic window set in a custom rubber extrusion
 • GS type hinge

*Cafe door on separate spec sheet.

Charges will be assumed by buyer for changes or cancellations to work in process. Buyer hereby accepts responsibility for all sizes and dimensions. This order will not be processed until all acknowledgement forms are signed and returned.

Specification accepted by: _____

Date: _____

NAD-7000 HDPE DOOR

JOB NAME/LOCATION

CUSTOMER/LOCATION

CUST. ORDER NO.

CUST. P.O. NO.